

Installation Instructions

ATVS15 ATV Spreader

A multipurpose spreader designed to distribute feed, seed and fertilizer while mounted on an ATV. The quick mount/detach brackets allow for easy installation and removal for "Use-on-Demand" availability.

Mounting Instructions

1. Remove the two hitch pins allowing the Mounting Bracket to separate from the spreader body.
2. Attach the Mounting Bracket to the rear of the ATV rack by using the U-bolts, washers and nuts (supplied). Be sure that the hole for the Gate Control Arm (in the bracket) is at the top when attaching it to the ATV. The multiple mounting holes are used for attaching the bracket to various models of ATV racks.
3. Position the Hopper Body into place on the Mounting Bracket. Position the main support spline on the Hopper into the Mounting Bracket, aligning the two sets of pinholes. Place the two mounting pins into each set of holes. The Spreader Body should now be held into place on the Mounting Bracket. Install the hairpin cotters to secure the spreader in place.
4. Remove the finger nut from the long end of the Gate Control Arm, slide the Arm through the hole in the top end of the Mounting Bracket and replace the finger nut. Remove the finger nut from the short end of the Gate Control Arm, slide it through the Gate Control and replace the finger nut.
5. Connect wire harness to motor and then plug the accessory adaptor into the ATV's accessory plug.
6. A "push/pull" action on the Gate Control Arm will allow you to control the opening size in the bottom of the Hopper. Enlarging the opening size will allow for more material to be spread. Adjust the opening to accommodate the size and quantity of material you wish to spread.

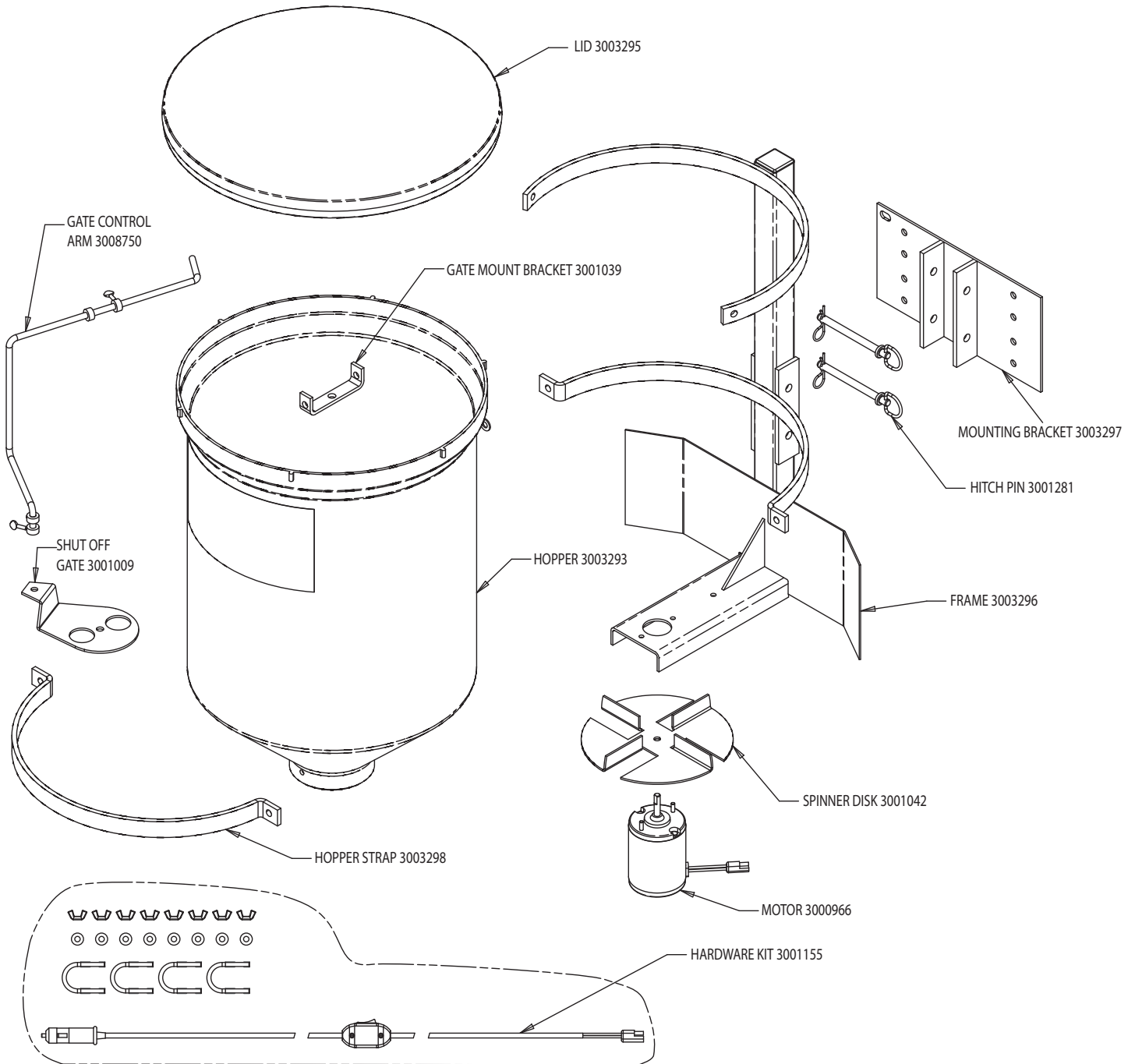


Operating Instructions

1. Set the Flow Control Collar at the base of the Hopper to the desired maximum position. Close the Shut-Off Gate completely. Load material into the Hopper; be sure to secure the Hopper Cover in place. Turn the "on/off" switch to the "on" position. While moving, open the Shut-Off Gate to begin spreading material.
2. Adjust the Shut-Off Gate by using the Flow Control Arm to increase or decrease the size of the opening. This will allow you increase or decrease the amount of material being spread.

PLEASE NOTE

1. Take precautions to operate the ATV in a safe manner. Follow precautions and guidelines as outlined in the ATV Owner's Manual.
2. In the event the Spreader Motor is not operating, check fuse in accessory adaptor and replace if blown.
3. Clean the Hopper and brackets after use. Some material can cause corrosion to metal parts, thus reducing the life of the Spreader Assembly.



Warranty

Buyers Products Co. warrants all truck/trailer hardware manufactured or distributed by it, to be free from defects in material and workmanship for a period of one year from date of shipment. Parts must be properly installed and used under normal conditions. Any product which has been altered, including modification, misuse, accident or lack of maintenance will not be considered under warranty. Normal wear is excluded. The sole responsibility of Buyers Products Co. under this warranty is limited to repairing or replacing any part or parts which are returned, prepaid, and are found to be defective by Buyers Products Co. Authorization from Buyers Products Co. must be obtained before returning any part. No charges for transportation or labor performed on Buyers' products will be allowed under this warranty.