



SNOW PLOW

FORGE 2.0 V-BOX SPREADER

PARTS EXPLOSION

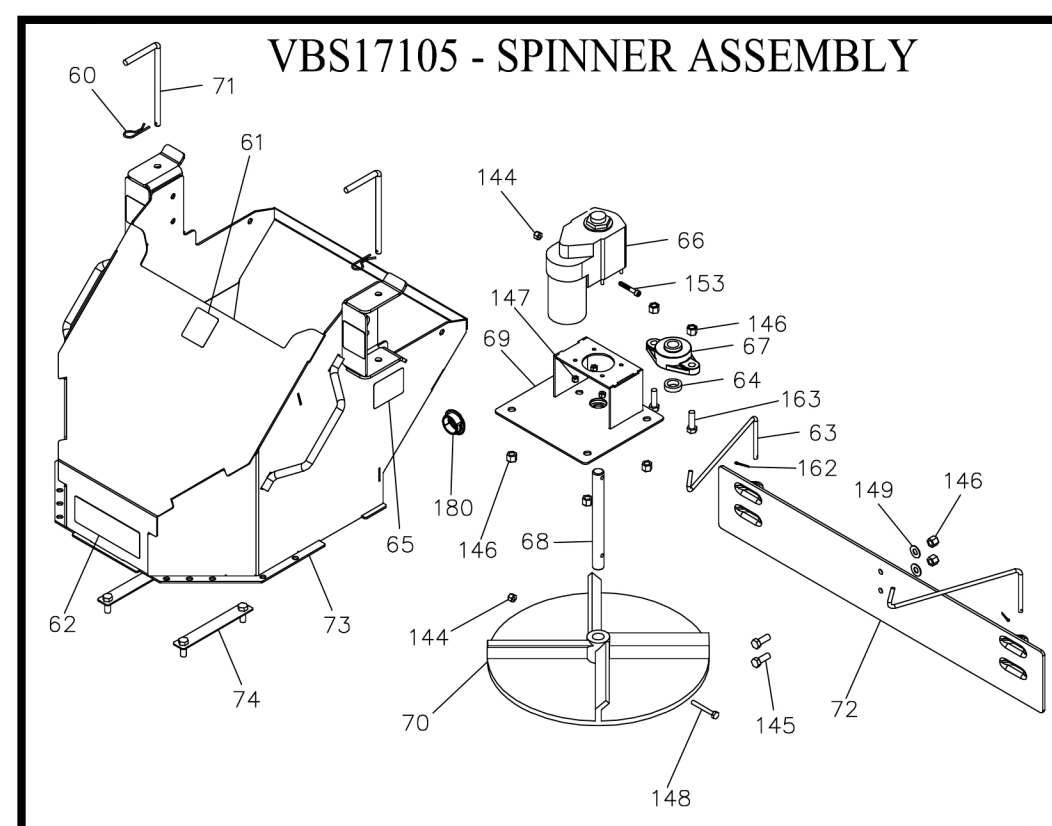
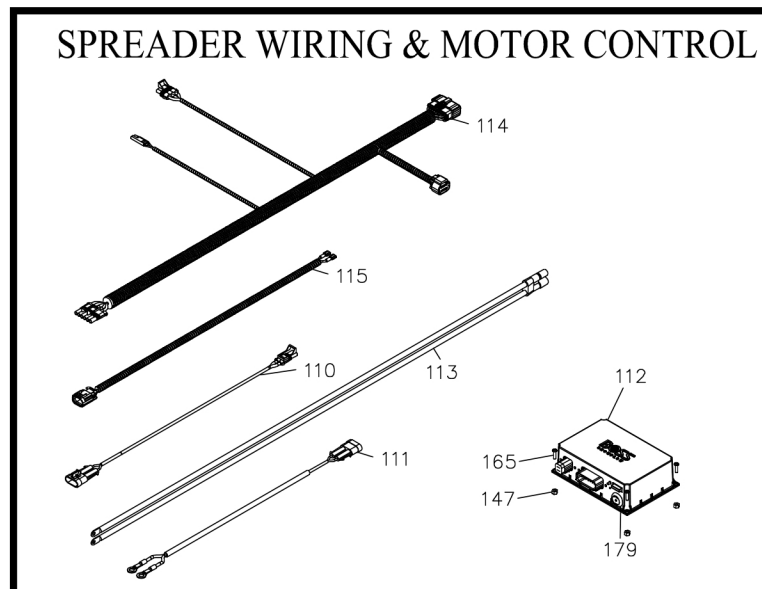
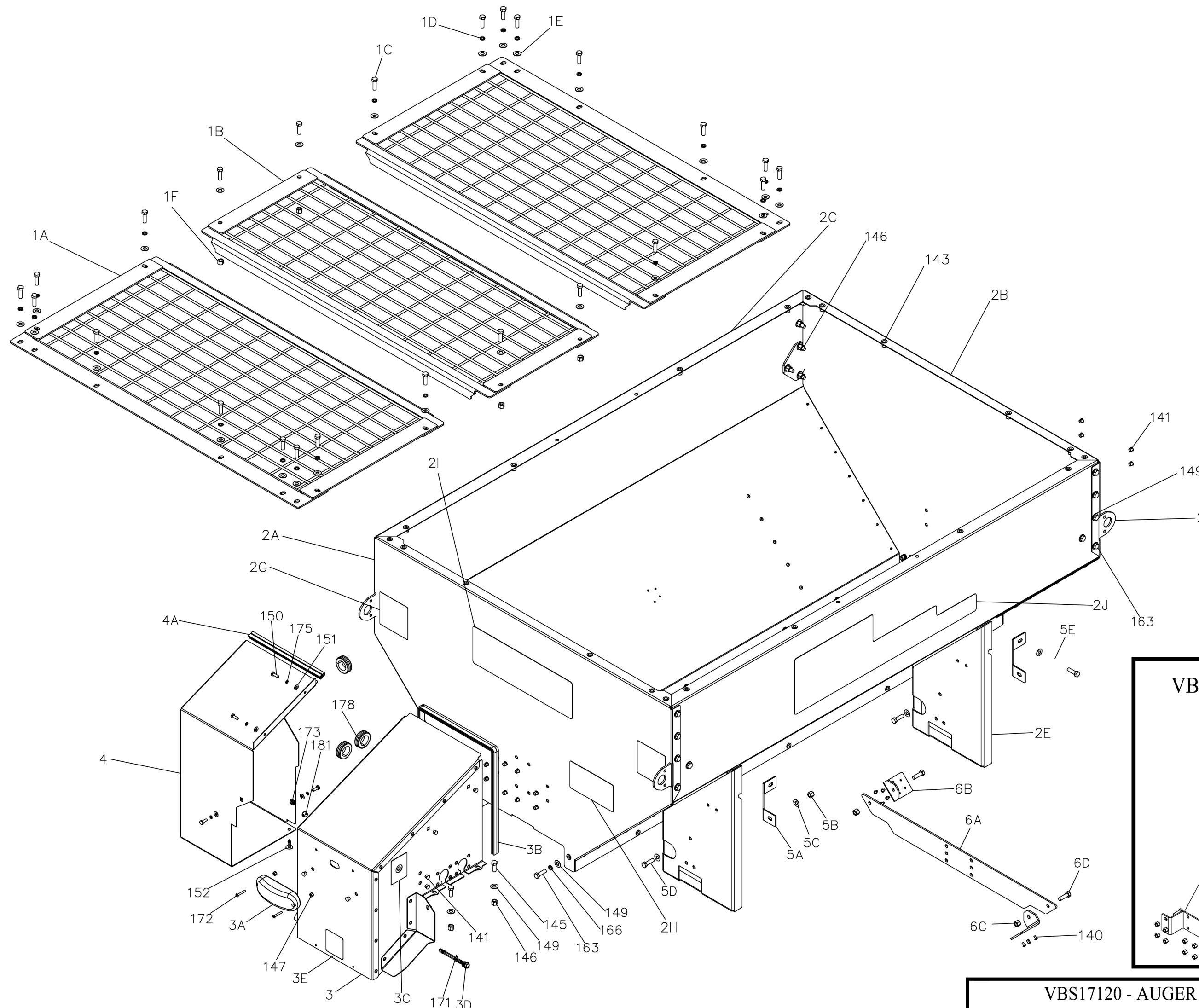
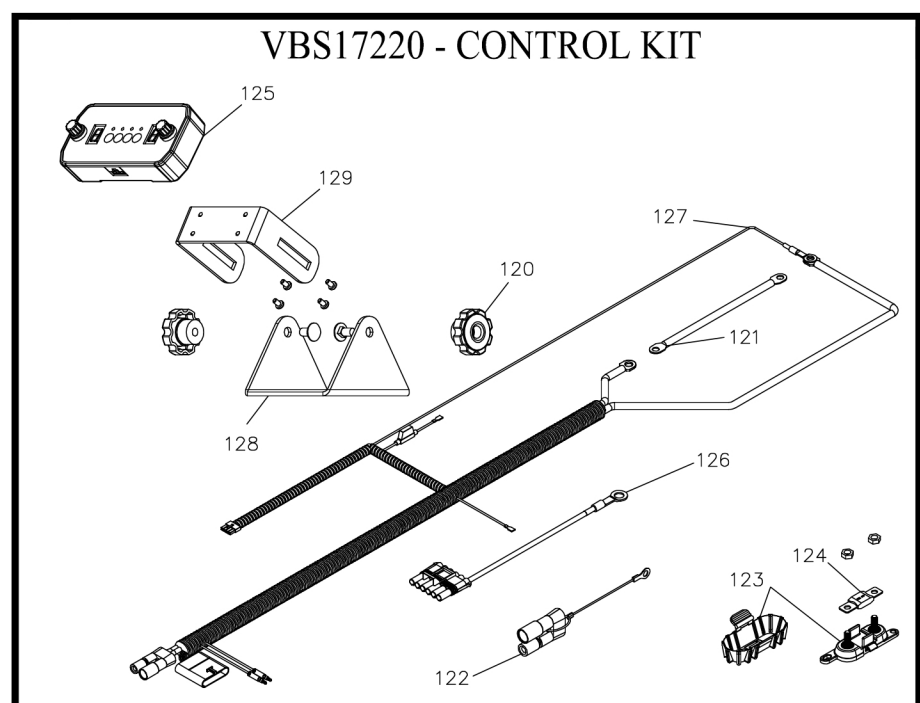
2017-2018



SPREADER COMPONENTS		
1	Top Screen with Hardware	VBS17174
1A	Includes: (2) End Top Screen	VBS19507-03
1B	(1) Center Top Screen	VBS17145-03
	(1) Fastener Kit, Top Screen, FORGE	HDW17206
1C	Includes: (24) Hex Head Cap Screw, 3/8"-16 X 1-1/4" ST/ST 18-8	HDW14431
1D	(20) Split Lock Washer, 3/8" ST/ST 18-8	HDW14439
1E	(24) Flat Washer, 3/8" ST/ST 18-8	HDW05859
1F	(4) Nylon Lock Nut, 3/8"-16 ST/ST 18-8 Moly Thread	HDW05854
2	Hopper	VBS17101
2A	Includes: (1) Front Hopper Panel	VBS17132
2B	(1) Rear Hopper Panel	VBS17135
2C	(2) Side Hopper Panel	VBS17104
2D	(4) Tie-Down Plate	VBS17133
2E	(2) Passenger Side Hopper Leg	VBS17157
2F	(2) Driver Side Hopper Leg	VBS17158
2G	(4) Tie-Down Caution Decal	MSC19513
2H	(1) Main Caution Decal	MSC17213
2I	(1) BOSS Logo Decal	MSC17222
2J	(2) FORGE 2.0 Logo Decal	MSC17223
3	Front Cover, Auger	VBS17108
3A	Includes: (1) Center High Mounted Stop Light (CHMSL)	VBS14548
3B	(1) Edge Trim	MSC17217
3C	(1) Dump Switch Decal	MSC17211
3D	(1) Dump Switch	MSC14582
3E	(1) Auger Caution Decal	VBS14308
	Front Cover, Pintle	VBS17109
3A	Includes: (1) Center High Mounted Stop Light (CHMSL)	VBS14548
3B	(1) Edge Trim	MSC17217
3C	(1) Dump Switch Decal	MSC17211
3D	(1) Dump Switch	MSC14582
3E	(1) Chain Caution Decal	VBS14307
4	Gearmotor Cover, Pintle	VBS17197
4A	Includes: (1) Edge Trim, Gearmotor Cover	MSC17184
5	Hopper Leg Bracket Kit	VBS17259
5A	Includes: (4) Hopper Leg Bracket	VBS19517
5B	(4) Nylon Lock Nut, 3/8"-16 ST/ST 18-8 Moly Thread	HDW05854
5C	(12) Washer, Flat, 3/8" ST/ST 18-8	HDW05859
5D	(8) Hex Head Cap Screw, 3/8"-16 X 1-1/4" ST/ST 18-8	HDW14431
5E	(4) Washer, Split Lock, 3/8" ST/ST 18-8	HDW14439
6	Hopper Cross Brace Kit	VBS17257
6A	Includes: (1) Inverted V Cross Bracket	VBS17111-03
6B	(2) Inverted V Mount Bracket	VBS17112-03
6C	(2) Nylon Lock Nut, 3/8"-16 ST/ST 18-8 Moly Thread	HDW05854
6D	(2) Hex Head Cap Screw, 3/8"-16 X 1-1/4" ST/ST 18-8	HDW14431

VBS17120 - AUGER DRIVE ASSEMBLY COMPONENTS		
10	Pin Lock Weldment	VBS14025
11	Bearing Mount Weldment	VBS14215
12	Rear Cover	VBS14221
13	End Shaft	VBS14225
14	Auger, 6" O.D. X 9" Pitch	VBS14260-03
15	Auger Caution Decal	VBS14308
16	4-Bolt Flange Bearing	VBS14405
17	Slide Stop Weldment	VBS14445
18	Gearbox, 91.6:1	VBS14470
19	Coupling, 30mm	VBS14585
20	Auger Weldment	VBS14670
21	Front Cover Plate	VBS15156
22	Gearmotor Mount Plate	VBS15157
23	1/2 HP Motor	VBS17115
24	Side Cover Plate	VBS17167

VBS17130 - PINTLE DRIVE ASSEMBLY COMPONENTS		
30	Poly Bearing Cover	MSC17219
31	Chain Caution Decal	VBS14307
32	Take-Up Bearing	VBS14406
33	Idle Shaft	VBS14407
34	Drive Shaft	VBS14408
35	Sprocket 602-6T	VBS14410
36	Gearbox, 137:1	VBS14471
37	Cover, Take-Up Bearing	VBS14518
38	Drawer	VBS15211
38A	Includes: (1) Drop Pan Handle	VBS14522
38B	(1) Drop Pan	VBS15198
39	Sweeper	VBS14523
40	Sweeper Mounting Bar	VBS14537
41	Coupling, 1-1/4"	VBS14538
42	Gearmotor Mount Pin Lock Weldment	VBS14610
43	Pintle Chain	VBS14639
44	Rear Cover	VBS15118
45	Feed Plate Extension	VBS15186
46	Pintle Weldment	VBS17090

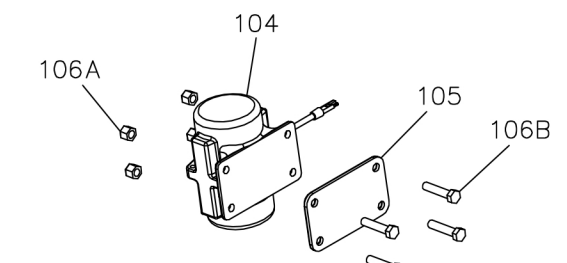


SLS17260-A

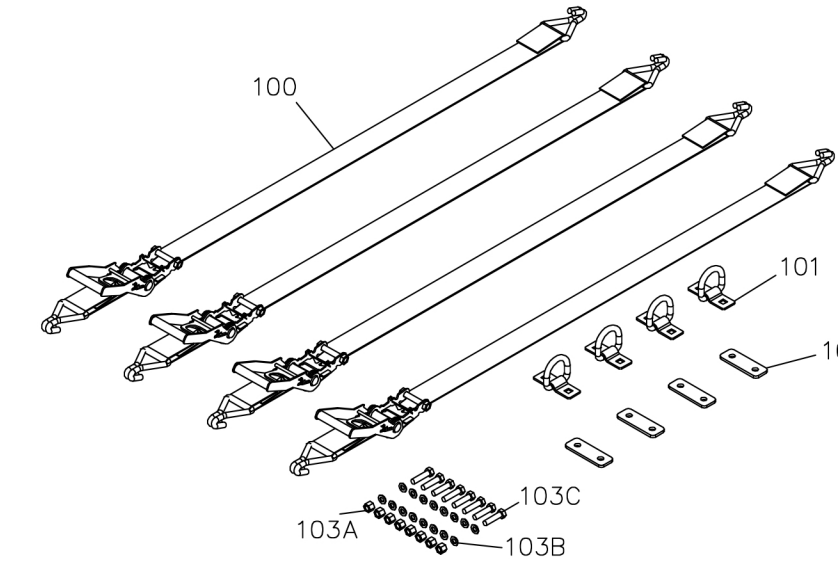
BOSS Products reserves the right under its continuous product improvement policy to change construction or design details and furnish equipment when so altered without reference to illustrations or specifications used herein.

This product is covered under one or more of the following patents:
PATENTS: www.ttcopats.com
Other Patents Pending

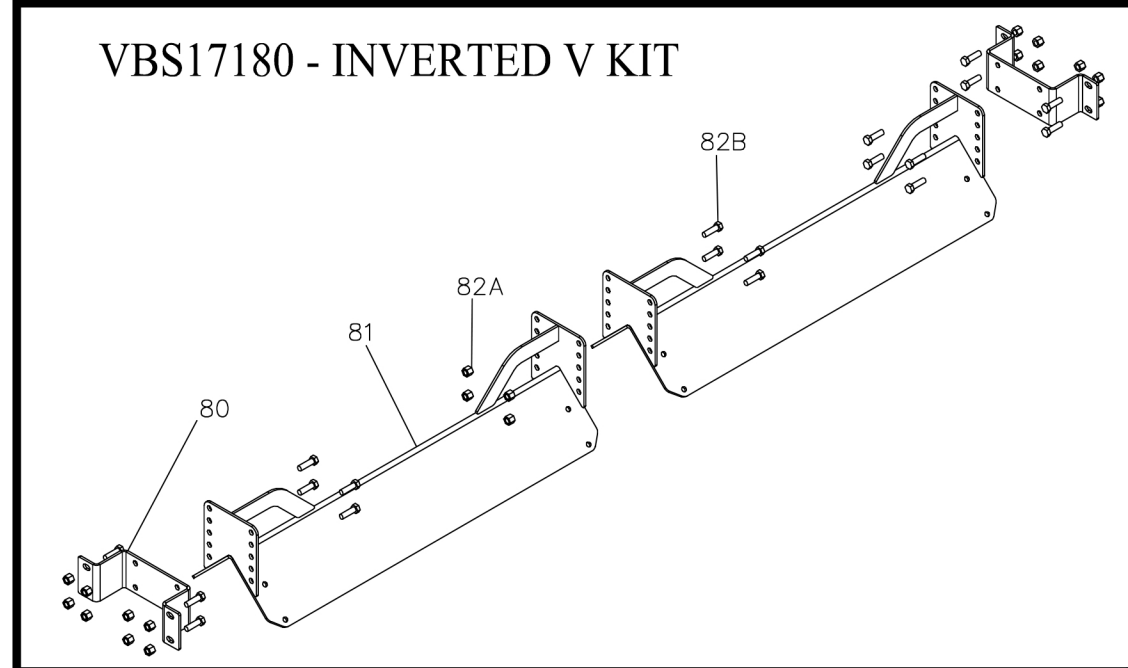
VBS14465 - SINGLE VIBRATOR KIT



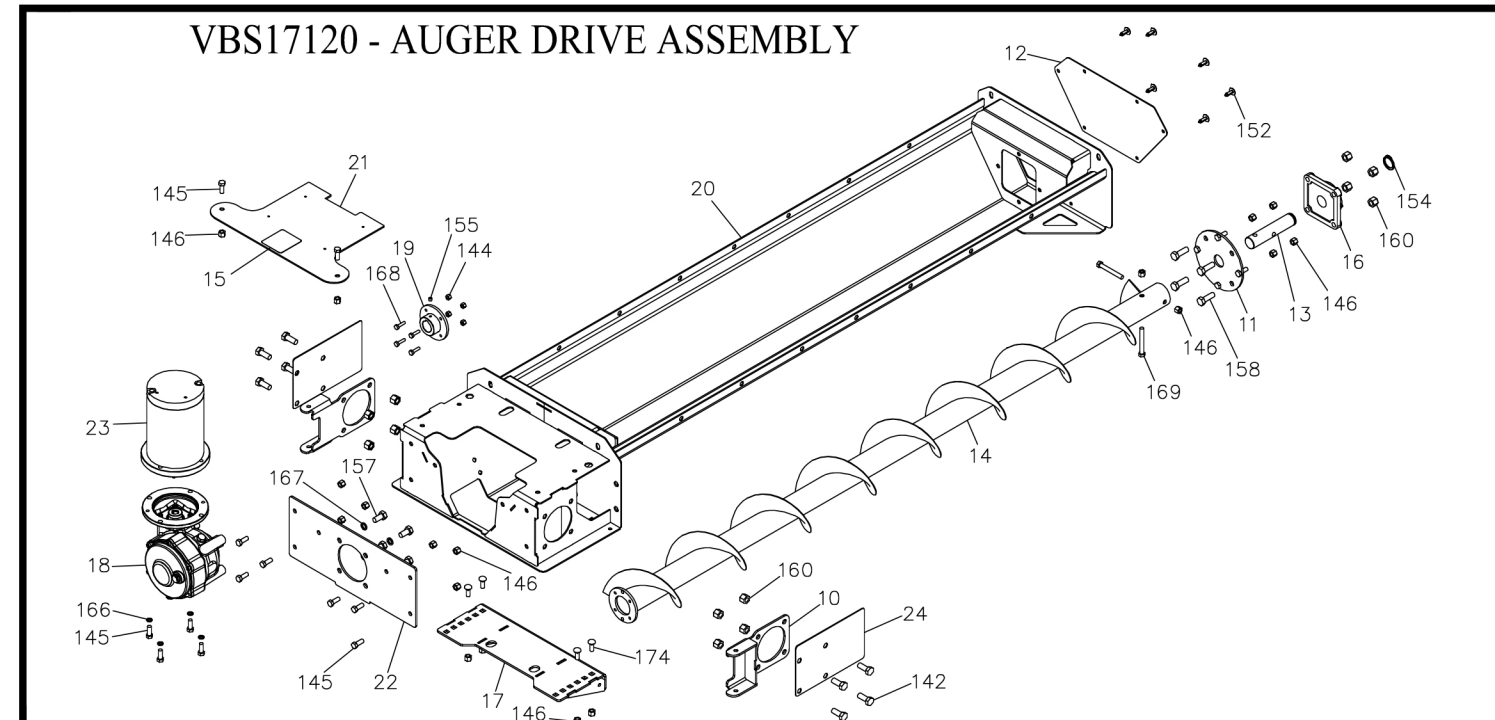
VBS14551 - TIE-DOWN KIT



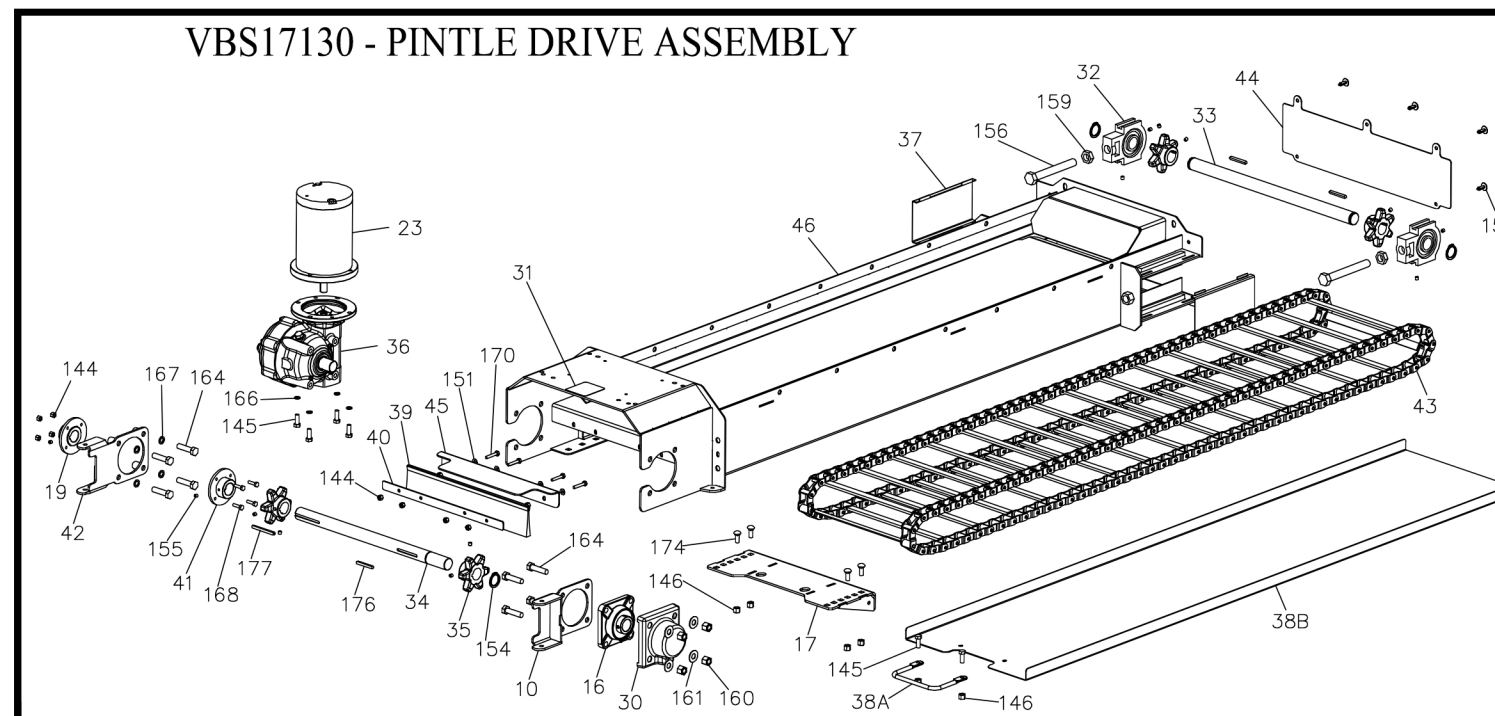
VBS17180 - INVERTED V KIT



VBS17120 - AUGER DRIVE ASSEMBLY



VBS17130 - PINTLE DRIVE ASSEMBLY



VBS17105 - SPINNER ASSEMBLY COMPONENTS

60	Hairpin Cotter	HDW14032
61	Pinch Point Caution Decal	MSC18131
62	Spinner Caution Decal	MSC19869
63	Deflector Bracket	TGS05782
64	Shaft Seal	TGS05809
65	Pin Lock Decal	TGS05896
66	Spinner Gearmotor	TGS05898
67	Bearing, 3/4" Pillow Block	TGS15532
68	3/4" Diameter Spinner Shaft	VBS14008
69	Spinner Motor Mount Weldment	VBS14010
70	14-1/2" Spinner Disk, Urethane	VBS14017
71	Latch Pin, Spinner Assembly	VBS14027
72	Adjustable Deflector	VBS14039
73	Spinner Housing	VBS17106
74	Spinner Motor Mount Bolt Plate	VBS19524

VBS17180 - INVERTED V KIT COMPONENTS

80	Mounting Bracket (2)	VBS17181-03
81	Inverted V Weldment (2)	VBS14395-03
82	Fastener Kit, Inverted V	HDW17207
82A	Includes: (20) Nut, Nylon Locking, 3/8"-16, ST/ST 18-8 Moly Thread	HDW05854
82B	(20) Hex Head Cap Screw, 3/8"-16 X 1-1/4" ST/ST 18-8	HDW14431

VBS14551 - TIE-DOWN KIT COMPONENTS

100	Ratchet Strap, 2" X 10' (4)	VBS14547
101	D-Ring (4)	VBS14549
102	Bedmount Plate	VBS14550
103	Fastener Kit, Tie-Down Kit	VBS14552
103A	Includes: (8) Nut, Nylon Locking, 3/8"-16, ST/ST 18-8 Moly Thread	HDW05854
103B	(16) Washer, Flat, 3/8" ST/ST 18-8	HDW05859
103C	(8) Hex Head Cap Screw, 3/8"-16 X 1-1/2" ST/ST 18-8	HDW05995

VBS14465 - SINGLE VIBRATOR KIT COMPONENTS

104	Vibrator	MSC14275
105	Backer Plate	VBS14301-03
106A	Includes: (4) Nut, Nylon Locking, 3/8"-16, ST/ST 18-8 Moly Thread	HDW05854
106B	(4) Hex Head Cap Screw, 3/8"-16 X 1-3/4" ST/ST 18-8	HDW14433

SPREADER WIRING & MOTOR CONTROL

110	Spinner Jumper	MSC14024
111	Spinner Harness	MSC14284
112	Motor Control	MSC17870
113	Power / Ground Cable	VBS14285
114	Main Harness	VBS17221
115	Dump Switch Harness	VBS19519

VBS17220 - CONTROL KIT COMPONENTS

120	Fastener Kit	HDW14464
121	24" Battery Cable	HYD12814
122	Dust Cap (PWR/GRD)	MSC03721
123	Fuse Holder	MSC13176
124	Fuse (150 Amp)	MSC13177
125	Display Control	MSC17840
126	Dust Cap, Truck side Harness V-Box	VBS14266
127	Vehicle Side Harness	VBS14283
128	Lower Control Mount Bracket	VBS14460-03
129	Upper Control Mount Bracket	VBS14461-03

HARDWARE

140	Interlock Rivet Kit	HDW17208
	Includes: (10) Interlock Rivet, 3/16" ST/ST 18-8	HDW17196
141	Plug Kit	MSC17258
	Includes: (6) Sheet Metal Plug, 3/8"	MSC17195
142	Hex Head Cap Screw, 1/2"-13 X 1-1/4" ST/ST 18-8	HDW01903
143	Rivet Nut, 3/8"-16 ST/ST 18-8	HDW02030
144	Nut, Nylon Locking, 1/4"-20 ST/ST 18-8	HDW05851
145	Hex Head Cap Screw, 3/8"-16 X 1" ST/ST 18-8	HDW05853
146	Nut, Nylon Locking, 3/8"-16 ST/ST 18-8 Moly Thread	HDW05854
147	Nut, Nylon Locking, #10-32 ST/ST 18-8	HDW05856
148	Hex Head Cap Screw, 1/4"-20 X 2" ST/ST 18-8	HDW05857
149	Washer, Flat, 3/8" ST/ST 18-8	HDW05859
150	Hex Head Cap Screw, 1/4"-20 X 3/4" ST/ST 18-8	HDW05875
151	Washer, Flat, 1/4" ST/ST 18-8	HDW06299
152	Push Clip, 8mm	HDW09299
153	Allen Head Cap Screw, 1/4"-20 X 1-1/2" ST/ST 18-8	HDW10778
154	Snap Ring, External, 1-1/4" I.D.	HDW14226
155	Set Screw, 5/16"-18 X 3/8"	HDW14415
156	Hex Head Cap Screw, 3/4"-10 X 10", Full Thread ST/ST 18-8	HDW14420
157	Hex Head Cap Screw, 1/2"-13 X 1" ST/ST 18-8	HDW14421
158	Hex Head Cap Screw, 1/2"-13 X 1-1/2" ST/ST 18-8	HDW14422
159	Nut, Jam, Top Lock, 3/4"-10 ST/ST 18-8	HDW14424
160	Nut, Nylon Locking, 1/2"-13 ST/ST 18-8	HDW14426
161	Washer, Flat, 1/2" ST/ST 18-8	HDW14428
162	Cotter Pin, 5/64" X 3/4" ST/ST 18-8	HDW14430
163	Hex Head Cap Screw, 3/8"-16 X 1-1/4" ST/ST 18-8	HDW14431
164	Hex Head Cap Screw, 1/2"-13 X 2" ST/ST 18-8	HDW14436
165	Pan Head Screw, #10-32 X 3/4" ST/ST 18-8	HDW14438
166	Washer, Split Lock, 3/8" ST/ST 18-8	HDW14439
167	Washer, Split Lock, 1/2" ST/ST 18-8	HDW14457
168	Hex Head Cap Screw, 1/4"-20 X 1" ST/ST 18-8	HDW14533
169	Hex Head Cap Screw, 3/8"-16 X 3" ST/ST 18-8	HDW14558
170	Hex Head Cap Screw, 1/4"-20 X 1-1/2", Full Thread ST/ST 18-8	HDW14566
171	Spring Retaining Clip	HDW15162
172	Pan Head Screw, #10-32 X 1-1/4" ST/ST 18-8	HDW17119
173	Nut, Cage, 1/4"-20 ST/ST 18-8	HDW17176
174	Carriage Bolt, 3/8"-16 X 1" ST/ST 18-8	HDW18163
175	Washer, Split Lock, 1/4" ST/ST 18-8	HDW19388
176	Key, 2" X 1/4" X 1/4"	MSC14419
177	Key, 3" X 1/4" X 1/4"	MSC14456
178	Grommet, 1-1/4" I.D. X 1-1/2" O.D. X 3/16" Groove	MSC14559
179	Break-Through Grommet, 3/4"	MSC17171
180	Break-Through Grommet, 1-3/8"	MSC17172
181	Sheet Metal Plug, 1/2"	MSC19518