



SNOW PLOW

# RT3 EXT PLOW

## EXT STRAIGHT-BLADE PLOW

### PARTS EXPLOSION

#### 2017-2018



WELDMENTS		
1	Coupler Assembly W/Pins Only (EXT)	CPA19102
2	Pushframe Assembly (Super Duty & EXT)	STB04190-03
3	Pushframe Attachment Bar (EXT)	STB19125-03
4	Wing, EXT - Left (Driver's Side)	STB19250-01
5	Wing, EXT - Right (Passenger's Side)	STB19255-01

BLADE (WITH CUTTING EDGES)		
6	Blade (8'-10" EXT)	STB19200

CUTTING EDGES		
7	Cutting Edge (EXT Main)	STB19280-03
8	Cutting Edge (PS Wing)	MSC19270
9	Cutting Edge (DS Wing)	MSC19275
10A	Includes: (3) Carriage Bolt 1/2" - 13 X 2-1/2" GR5	HDW19136
10B	(3) Nut, 1/2" Oval Top Lock	
10C	(3) HHCS, 1/2"-13 X 1-1/2" GR5	
10D	(3) Nut, 1/2" Nylon Top Lock	
11	Carriage Bolt Set (EXT)	HDW19137
11A	Includes: (12) Carriage Bolt 5/8" - 11 X 2" GR5	
11B	(12) Washer, 5/8" Hardened	
11C	(12) Nut, 5/8" Oval Top Lock	

PLOW COMPONENTS		
12	Shock Absorber Option Kit	STB04816
12A	Includes: (1) Shock Absorber	MSC01517
12B	(2) Blade Shock Mounts	STB03014
12C	(1) Shock Absorber Option Fastener Kit	HDW05609
13	Kickstand Leg	STB03220
14	Curb Guard, EXT - Left (Driver's Side)	STB19295-03
15	Curb Guard, EXT - Right (Passenger's Side)	STB19290-03
16	Light Bar Assembly	LBA11111
17	Hydraulic Enclosure Cover	CPA19113
18	Spring, Trip	MSC01309
19	Blade Guide, Set of (2) W/Hardware	MSC01870
20	Blade Guide Tip, Set of (2)	MSC01562
21	Bushing, Wing Tube Sider	MSC19265
22	Retainer Plt, Wing Bushing	STB19266-01
23	Strap, Adhesive backed HDPE	MSC19202
24	Cam, Angle of Attach Adjustment	STB19257-01

HYDRAULIC POWER UNIT		
25	Hydraulic Pump - Power Unit	HYD01710
Includes the Following Commonly Ordered Parts:		
25A	Hydraulic Pump Filter Cap	HYD01636
25B	Hydraulic Pump Motor - Bucher	HYD09328
25C	Hydraulic Reservoir Drain Plug	HYD01712
25D	Relief Valve (2,500 PSI)	HYD09365
25E	Hydraulic Reservoir, 2 quart	HYD04834
26	Seal Kit, Power Unit	HYD09366
	Fill Cap & Elbow Kit	MSC05078

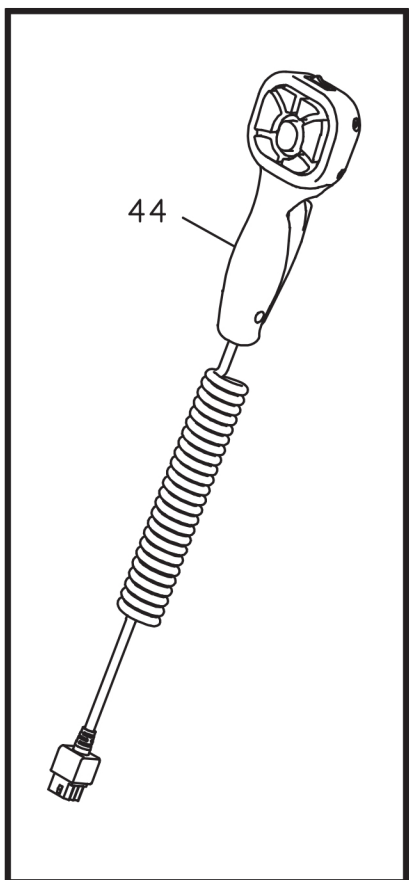
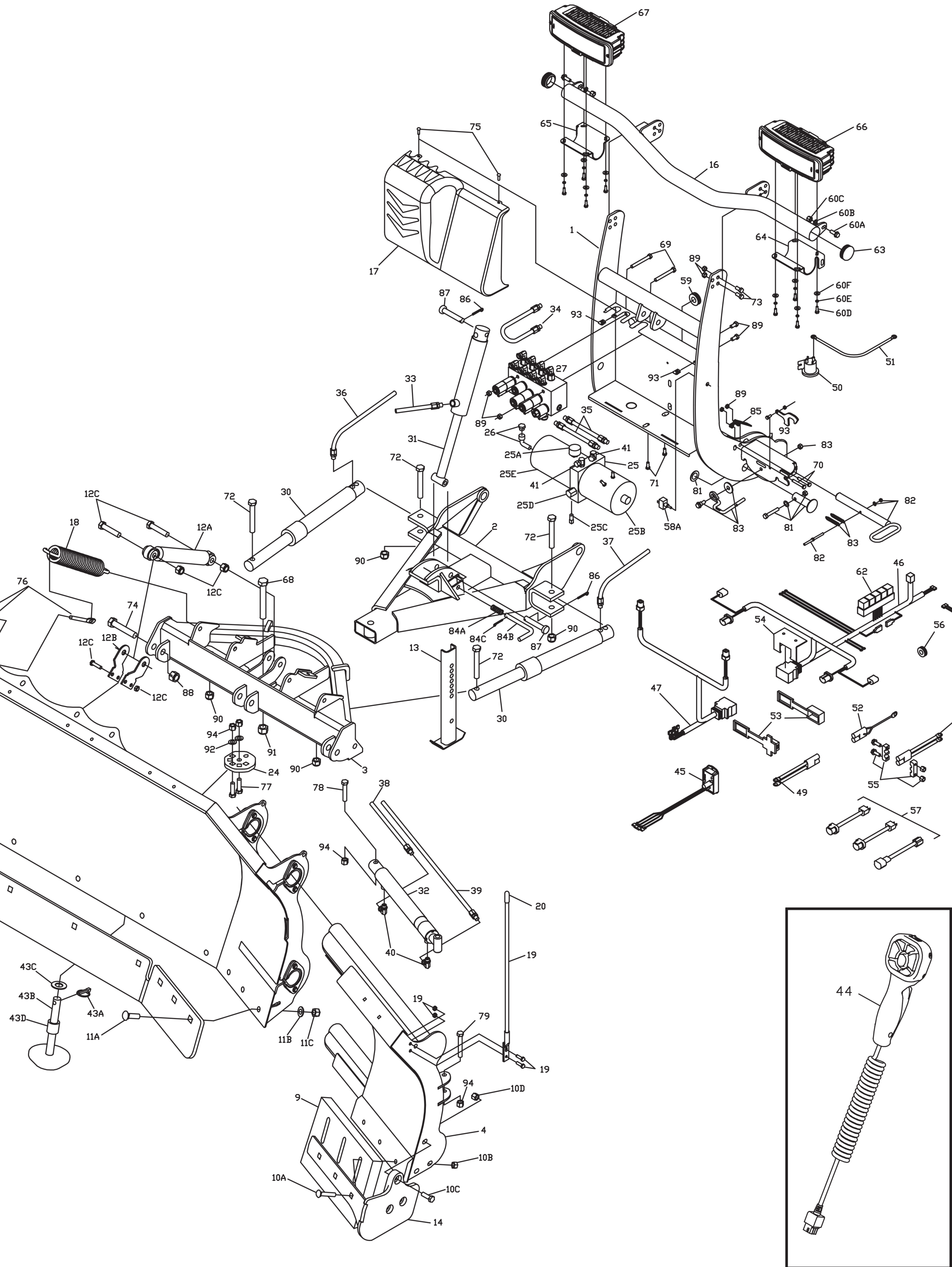
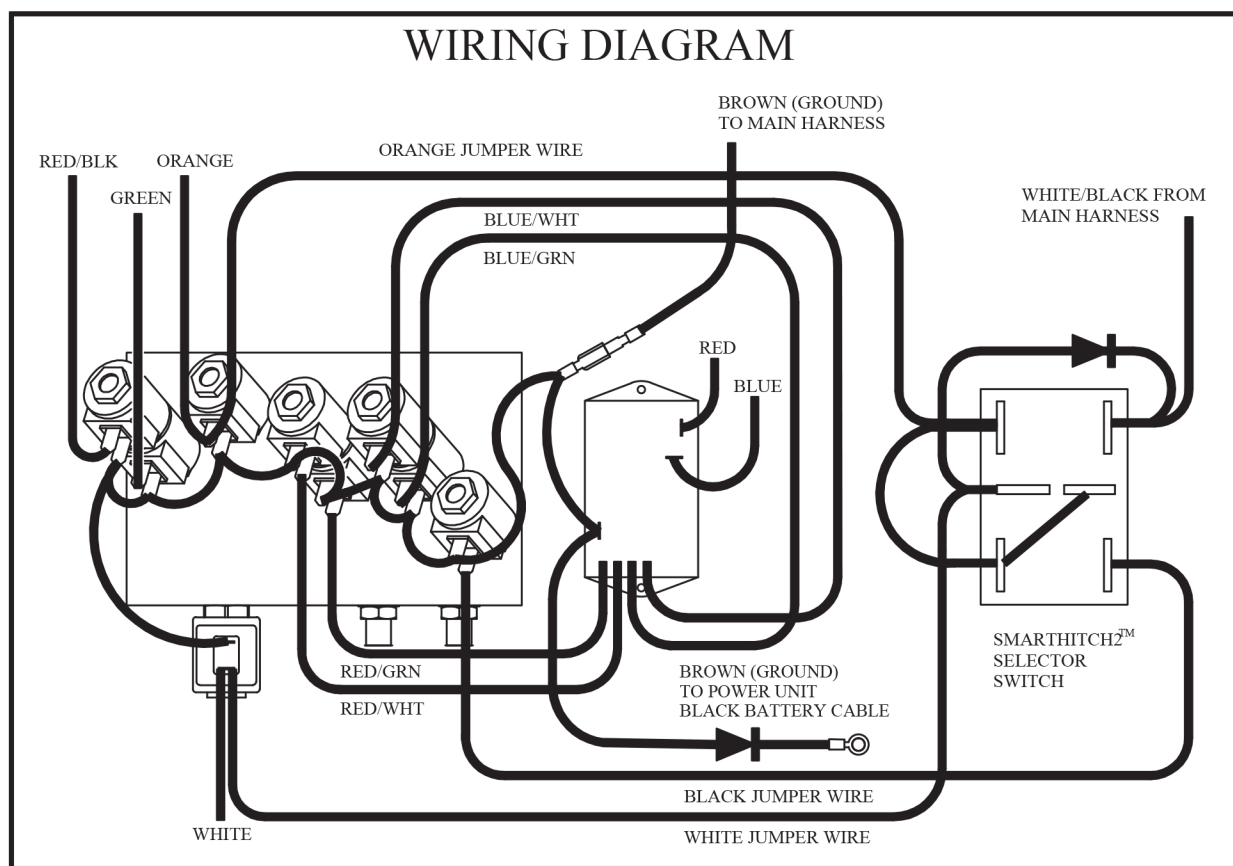
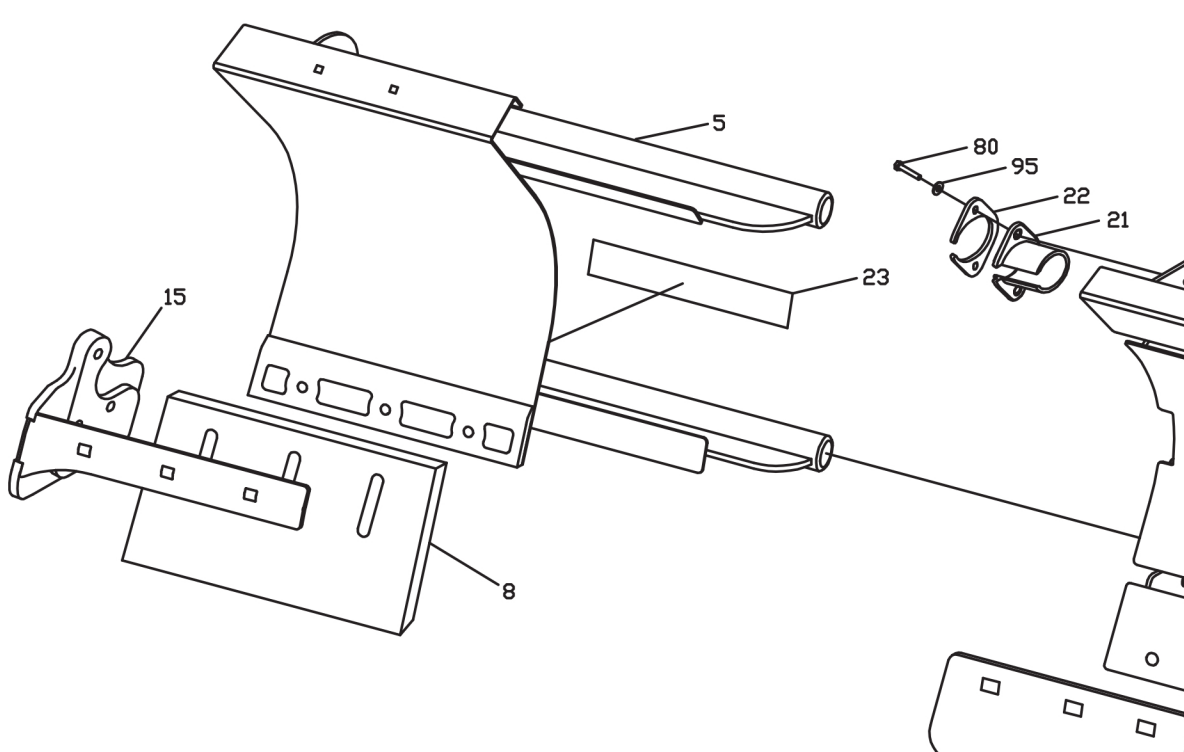
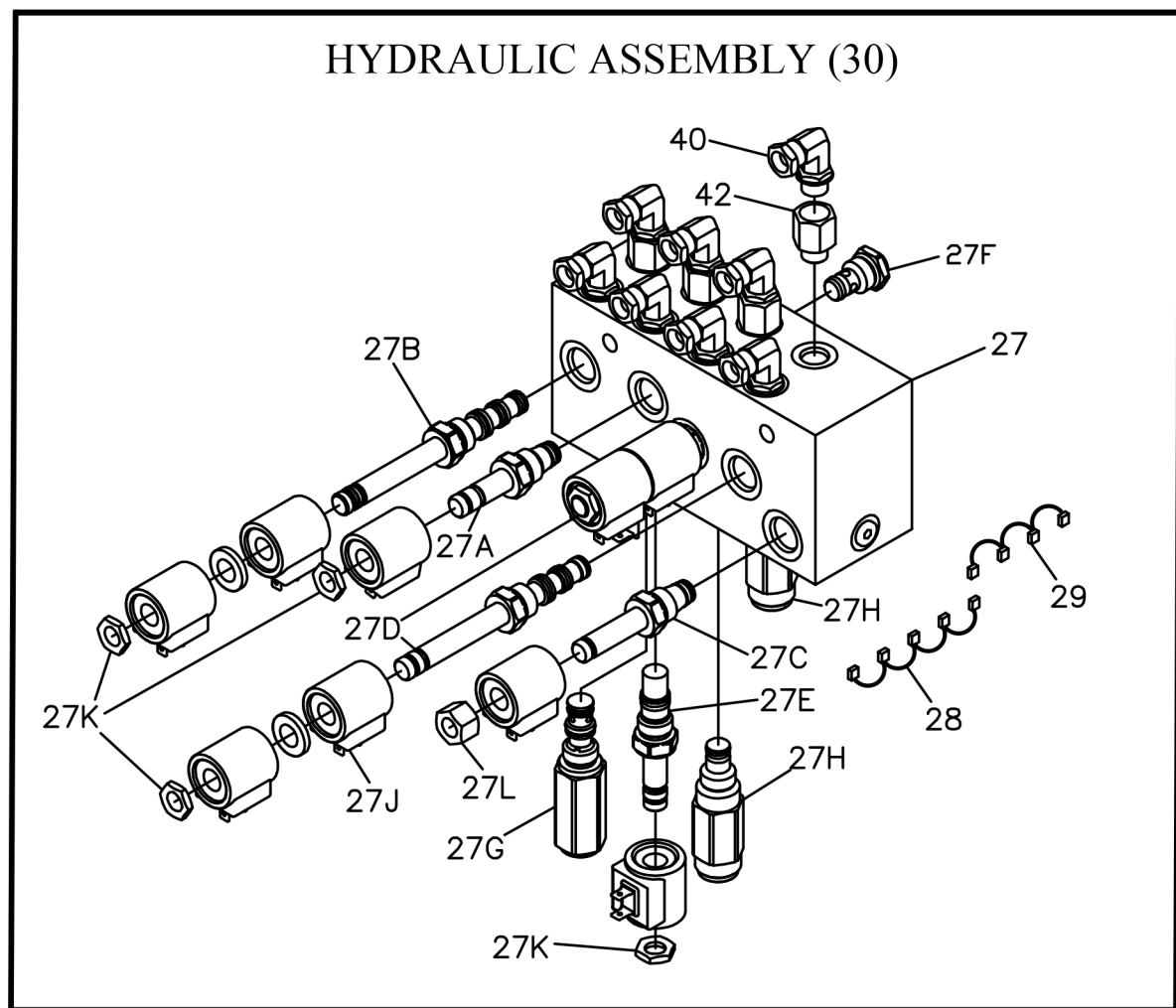
HYDRAULIC VALVE ASSEMBLY		
27	Hydraulic Valve Assembly with SmartHitch (Gold)	HYD19112
Includes the Following Commonly Ordered Parts:		
27A	Hydraulic Valve, Lower Cartridge	HYD01637
27B	Hydraulic Valve, Angle Cartridge (3 Position - 4 Way Spool), #8	HYD07100
27C	Hydraulic Valve, SmartHitch Attach	HYD07047
27D	Hydraulic Valve, Wing Control Cartridge	HYD19132
27E	Hydraulic Valve, Lift/Check Cartridge	HYD19133
27F	Hydraulic Valve, Flow Control Cartridge	HYD07048
27G	Relief Valve, Hydraulic Crossover (3,800 PSI)	HYD07027
27H	Relief Valve, Wing (1200 PSI)	HYD19134
27J	Coil, Hydraulic Valve	HYD01638
27K	Nut, Coil - used with valve HYD01637 & HYD07100	HYD07059
27L	Nut, Coil - used with valve HYD07047	HYD07060
28	Ground Strap, V Blade & EXT	MSC08850
29	Ground Strap Extension, EXT	MSC19129

CYLINDERS & CYLINDER SEAL KITS		
30	Hydraulic Angle Cylinder (Serial Number G1220 & Higher)	HYD09731
	Seal Kit for Hydraulic Angle Cylinder HYD09731	HYD08842
31	Hydraulic Lift Cylinder	HYD09430
	Seal Kit for Hydraulic Lift Cylinder HYD09430	HYD09431
32	Hydraulic Wing Cylinder (EXT)	HYD19260
	Seal Kit for Hydraulic Wing Cylinder HYD19260	HYD19138

HOSES & FITTINGS		
33	Hydraulic Hose (Lift) 1/4" X 18", (1/4" MNPT X SAE #6)	HYD09922
34	Hydraulic Hose (SmartHitch2) 1/4" X 15-1/2", (1/4" MNPT X SAE #6)	HYD01695
35	Hydraulic Hose (Power Unit to Manifold) 1/4" X 14", (3/8" ORB X 1/4" MNPT)	HYD09967
36	Hydraulic Hose (P.S. Angle) 3/8" X 34", (1/4" MNPT X 3/8" MNPT)	HYD01810
37	Hydraulic Hose (D.S. Angle) 3/8" X 40", (1/4" MNPT X 3/8" MNPT)	HYD19121
38	Hydraulic Hose (Wing Extend) 3/8" X 50-1/2", (1/4" MNPT X 1/4" MNPT)	HYD19116
39	Hydraulic Hose (Wing Retract) 3/8" X 73-1/2", (1/4" MNPT X 1/4" MNPT)	HYD19115
40	Hydraulic Swivel Fitting, (Manifold) (1/4" ORS X 1/4" FPS)	HYD01620
41	Hydraulic Swivel Fitting, (Manifold) (1/4" ORS X 1/4" FPS)	HYD07015
42	Hydraulic Adapter Fitting, (Manifold) (46 ORBM X .46 ORBF)	HYD19109

OPTIONS & ACCESSORIES		
43	Plow Shoe Assembly, Cast	MSC01570
43A	Includes: (1) Quick Pin, 7/16"	
43B	(1) Plow Shoe, (1" Shaft)	
43C	(12) Washer, 1" PLT	
43D	(1) Spacer, 1-1/2" Long	
	Rubber Snow Deflector (10' & EXT)	MSC17611B
	Red Touch-Up Spray Paint (12oz.)	MSC04098
	Black Touch-Up Spray Paint (12oz.)	MSC04036
	Red Touch-Up Spray Paint (Quart)	MSC04358
	Black Touch-Up Spray Paint (Quart)	MSC04359
	Dielectric Grease (1 oz.)	MSC03423
	Boss High Performance Hydraulic Fluid - Case (12 per)	HYD01704X001
	Spare Parts Kit	MSC04298
	Sight System	MSC09644
	Ballast Retainer Kit	MSC09845

CONTROLLER		
44	SmartTouch2, Hand Held Control, EXT	STB19143
	Handle (SmartTouch2)	MSC09613
	Housing (SmartTouch2) Straight Blade	STB09646
	Cord (SmartTouch2)	MSC09615
	Control Pad (SmartTouch2) Straight Blade	MSC19204
	Circuit Board (SmartTouch2) Straight Blade	MSC19142
	On/Off Switch (SmartTouch2)	MSC09916
45	Expansion Module	MSC19145



ELECTRICAL		
46	Light and Control Harness 128" (Vehicle Side) - 13 pin, Harness Only	MSC08001
47	Light and Control Harness 48" (Plow Side) - 13 pin, Harness Only, LED	MSC09417
48	Power/Ground Cable 90" (Vehicle Side)	HYD01684
49	Power/Ground Cable 36" (Plow Side)	HYD01690
50	Solenoid, Hydraulic Pump	HYD01633
51	Battery Cable, 24"	MSC03414
52	Battery Cable, 72" (Optional)	MSC03465
53	Power/Ground Cable Dust Cap/Plug Kit (Vehicle & Plow) Set of (2)	MSC05081
54	Weather Plug for Light & Control Harness Kit (Vehicle & Plow)	MSC04581
55	Control Harness Mounting Bracket	MSC03813-03
56	Power/Ground Cable Mounting Bracket W/Hardware	MSC09097
57	Rubber Split Grommet, 1-1/8"	MSC03761
58	Headlight Adapter Kit	Various
58A	SmartHitch2 Toggle Switch Kit (Includes Switch & Jumpers)	MSC04744
	Includes: (1) Switch, SmartHitch2 Toggle	MSC01889
	(1) Wiring Harness, SmartHitch2 (Orange)	MSC04672
	(1) Wiring Harness, SmartHitch2 (Black)	MSC09886
	(1) Wiring Harness w/Diode, SmartHitch2 (White)	MSC09887
	(1) Switch Boot, SmartHitch2	MSC04238
59	Rubber Grommet - for light and control harness in coupler tower	MSC03456
60	Headlight Mounting Fastener Kit	HDW11114
60A	Includes: (2) Hex Hed Cap Screw, 3/8" - 16 X 1" Washer Head Spinlock GR5 YZN	
60B	(2) Washer, 3/8" Flat YZN	
60C	(2) Nut, 3/8" - 16, Nylon Locking YZN	
60D	(8) Hex Head Cap Screw, 1/4" - 20 X 3/4" GR5 YZN	
60E	(8) Washer, 1/4" Split Lock YZN	
60F	(8) Washer, 1/4" Flat YZN	
61	Headlight Rocker Switch	MSC04747
62	Relay, 12V	MSC04294
63	Light Bar, End Cap	MSC09058
64	Relay Repair Kit	MSC08993
65	Fuse Holder Repair Kit	MSC01922
66	Headlight Mounting Bracket, Left, SmartHitch2	MSC11109-03
67	Headlight Mounting Bracket, Right, SmartHitch2	MSC11110-03
68	Headlight, Left, SmartHitch3	MSC16201
69	Headlight, Right, SmartHitch3	MSC16202

BOLTS		
68	Hex Head Cap Screw, 3/4" - 10 X 5-1/2" NC GR5 YZN (Center Pivot Pin)	HDW03036
69	Hex Head Cap Screw, 3/8" - 16 X 3-1/4" YZN (Manifold to Coupler)	HDW05573
70	Hex Head Cap Screw, 3/8" - 16 X 2-1/4" GR5 YZN (SmartHitch Torsion Spring)	HDW05521
71	Hex Head Cap Screw, 3/8" - 16 X 3/4" Washer HD Spinlock GR5 YZN (Pump to Coupler)	HDW05602
72	Hex Head Cap Screw, 5/8" - 11 X 4" GR5 YZN (Angle Cylinder Mount)	HDW01706
73	Hex Head Cap Screw, 3/8" - 16 X 1-1/4" YZN (Light Bar Assembly)	HDW01771
74	Hex Head Cap Screw, 3/4" - 10 X 4" NC GR5 YZN (Blade to Pushframe)	HDW03046
75	Thumb Screw Kit	MSC05077
76	Eye Bolt Kit, 1/2" X 4-1/4" (To Hole Center), YZN W/HDW	HDW19139
	Includes: (4) Spade Bolt, 1/2" X 4-1/4" (To Hole Center), YZN	
	(4) Nut, 1/2" NC NY/INS Lock YZN	
	(4) Washer, 1/2" Flat YZN	
77	Hex Head Cap Screw, 1/2" - 13 X 1-3/4" GR5 YZN (Cam)	HDW01802
78	Hex Head Cap Screw, 1/2" - 13 X 2-1/4" GR5 YZN (Wing Cylinder)	HDW01825
79	Hex Head Cap Screw, 1/2" - 13 X 3-1/2" GR5 YZN (Wing Cylinder)	HDW01779
80	Hex Head Cap Screw, 1/4" - 20 X 1-1/2" GR5 YZN (Bushing)	HDW19203

PINS, NUTS, WASHERS, & OTHER HARDWARE		
81	Coupler Pivot Pin Kit	MSC04251
Includes: (1) Pivot Pin RT3 1" X 3" YZN		
	(1) Hex Head Cap Screw, 3/8" - 16 X 1-1/2" YZN	
	(1) Nut, Nylon Locking 3/8" - 16 YZN	
	(1) Washer, 3/8" YZN	
	(1) Washer, 1" YZN	
82	Coupler Spring Pin Kit	MSC04675
Includes: (1) Coupler Spring Pin		
	(1) 1/4" Stop Pin YZN	
	(1) Nylon Washer, 1/4"	
	(1) Nut, Nylon Locking, 1/4" - 20 YZN	
83	Coupler Spring Pin Release Kit	MSC04676
Includes: (1) Coupler Spring Pin Release Handle (left or right)		
	(1) Coupler Spring Release Nylon Washer	
	(1) Nut, 3/8" Locking YZN	
	(2) Coupler Spring Pin Release Springs	
	(1) Shoulder Bolt w/Flange, 3/8" - 16 YZN	
84	Kickstand Spring Pin Kit	MSC03807
84A	Includes: (1) Kickstand Spring Pin Spring, 0.85" O.D. X 2-1/4" SS	
84B	(1) Kickstand Spring Pin	
84C	(1) Cotter Pin, 1/8" X 1-1/2" YZN	
	(1) Roll Pin, 3/16" X 2" YZN	
85	Spring Kit, SmartHitch Torsion Set of (2)	MSC05076
86	Harpin Cotter, #16 YZN	HDW05544
87	Clevis Pin, 5/8" X 3-1/2" YZN	HDW05563
	Pin Kit, Lift Cylinder Clevis	MSC05674
Includes: (1) Harpin Cotter, #16 YZN		
	(1) Clevis Pin, 5/8" X 3-1/2" YZN	
88	Nut, Lock 3/4" - 10 GR5 YZN (Pushframe Attachment Bar to Blade)	HDW03037
89	Nut, Self-Locking 3/8" - 16 YZN	HDW01720
90	Nut, Oval Top Lock 5/8" - 11 YZN	HDW01709
91	Nut, Lock 3/4" - 10 GR5 YZN (Pushframe to Attachment Bar Pivot Pin)	HDW03037
92	Washer, 1/2" Flat YZN	HDW01729
93	Latch Kit (76", 80", 86", 90" RT3 Straight Blade)	MSC04687
Includes: (1) Latch (76", 80", 86", 90" RT3 Straight Blade)		
	(1) Hex Head Cap Screw, 1/4" - 20 X 3/4" GR5 YZN	
	(1) Nut, Nylon Locking 1/4" - 20 YZN	
94	Nut, Nylon Locking 1/2" - 13 YZN	HDW01748
95	Washer, 1/4" Flat YZN (Bushing)	HDW01750
96	Nut, Nylon Locking 1/4" - 20 YZN (Bushing)	HDW01725

BOSS Products reserves the right under its continuous product improvement policy to change construction or design details and furnish equipment when so altered without reference to illustrations or specifications used herein.

Patents: www.ttcopats.com